

Appendix 2 - 2023/24 Q2

ADULT SERVICES AND HOUSING, PUBLIC HEALTH, AND HOMELESSNESS

Cabinet Member: Councillor Ian Stephens	
Portfolio Responsibilities: <ul style="list-style-type: none"> • Community Care • Residential Care • Nursing Care • Home Care • Direct Payments • Day Care • Supported Living • Learning Disability Homes • Respite Care • Resettlement • Safeguarding • Social Workers • Family Working 	<ul style="list-style-type: none"> • Tobacco Control • Domestic Abuse • Early Help Services • Obesity • Sexual Health • Substance Misuse • 0-19 Services • Homelessness • Rough Sleeping • Housing Related Support • Housing Renewal and Enforcement • Disabled Facilities Grant • Transformational Change

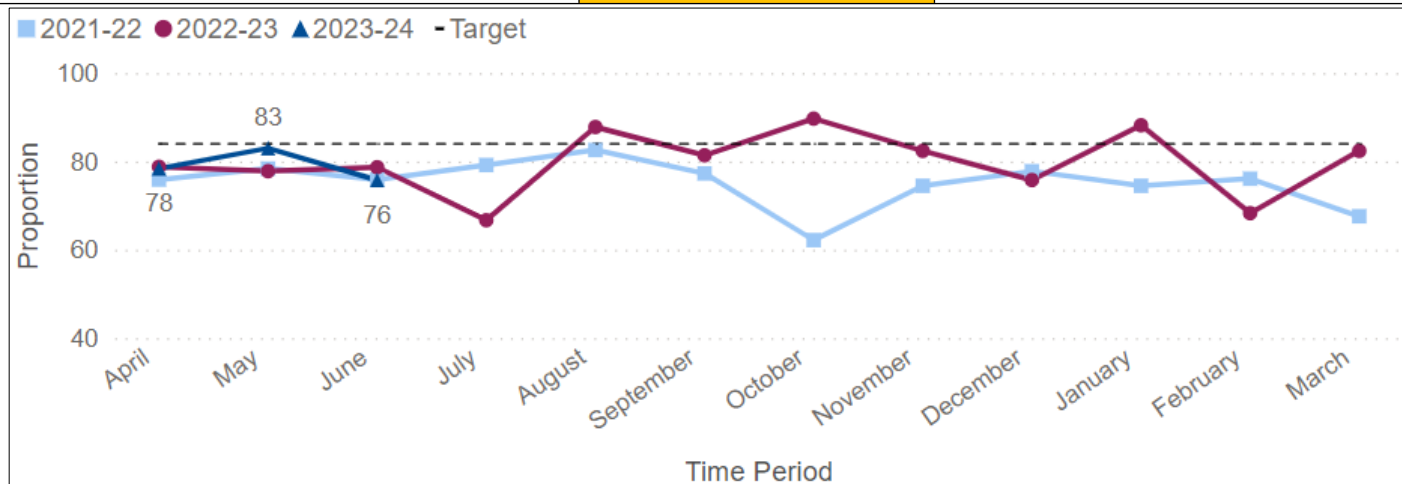
Performance Measures

Proportion of older people (65+) still at home 91 days after discharge from hospital into reablement/rehabilitation services

Aim: The percentage of people still at home 91 days after discharge is above 84 percent

UN Sustainable Development Goal: 3

Most Recent Status: June 2023	AMBER
Previous Status: March 2023	AMBER



- Please note that 91 days data provided by Adult Social Care (ASC) Performance reporting will always be three months in arrears, due to the nature of the measure.
- Of the 8 people in June that were not at home after 91 days, 6 people died, 1 was readmitted and 1 was placed in Res/Nursing care.

Number of new ASC clients discharged from hospital progressing to short or long-term support at home, commissioned via Horizon.

Aim: Monitoring Measure only

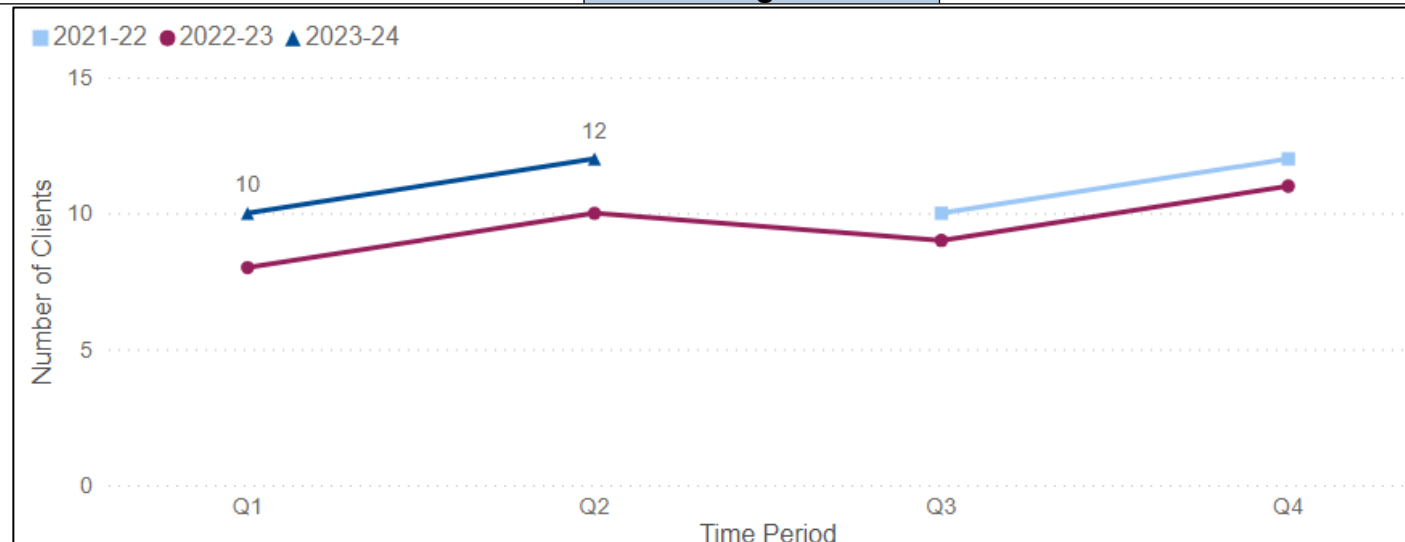
UN Sustainable Development Goal: 3

Most Recent Status: September 2023

Monitoring Measure

Previous Status: June 2023

Monitoring Measure



- Data for this measure is taken from Horizon.
- This figure remains consistent with previous months and has remained stable over the period.

Proportion of people in receipt of care and support funded by the council supported to remain at home

Aim: Monitoring Measure only

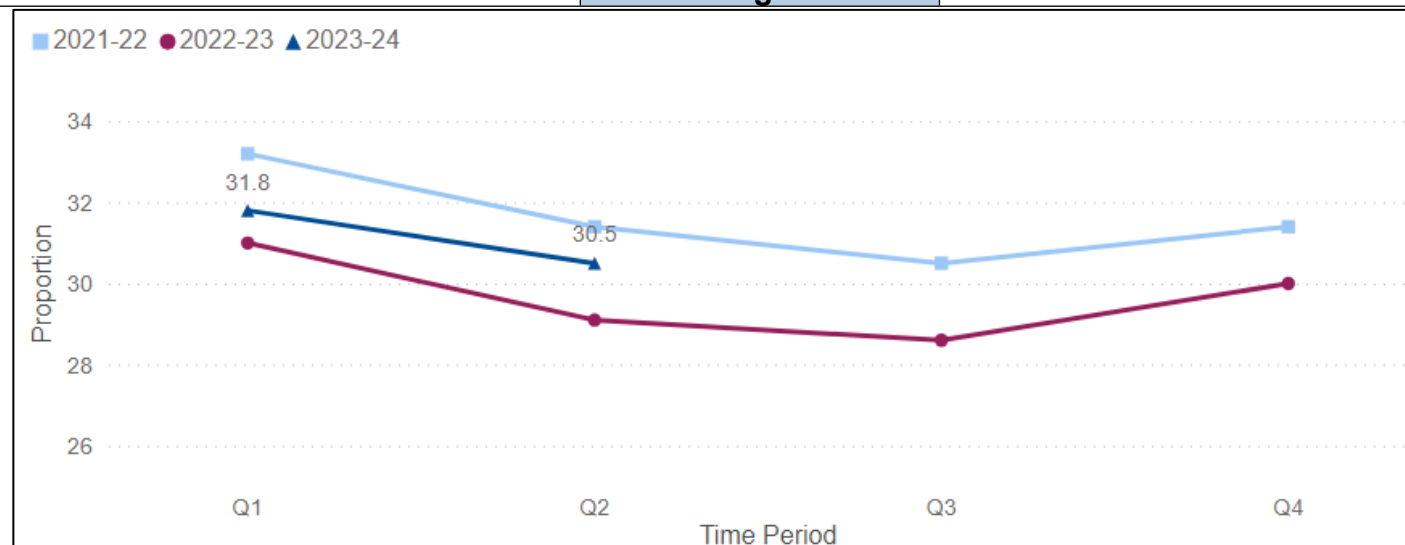
UN Sustainable Development Goal: 3

Most Recent Status: September 2023

Monitoring Measure

Previous Status: June 2023

Monitoring Measure



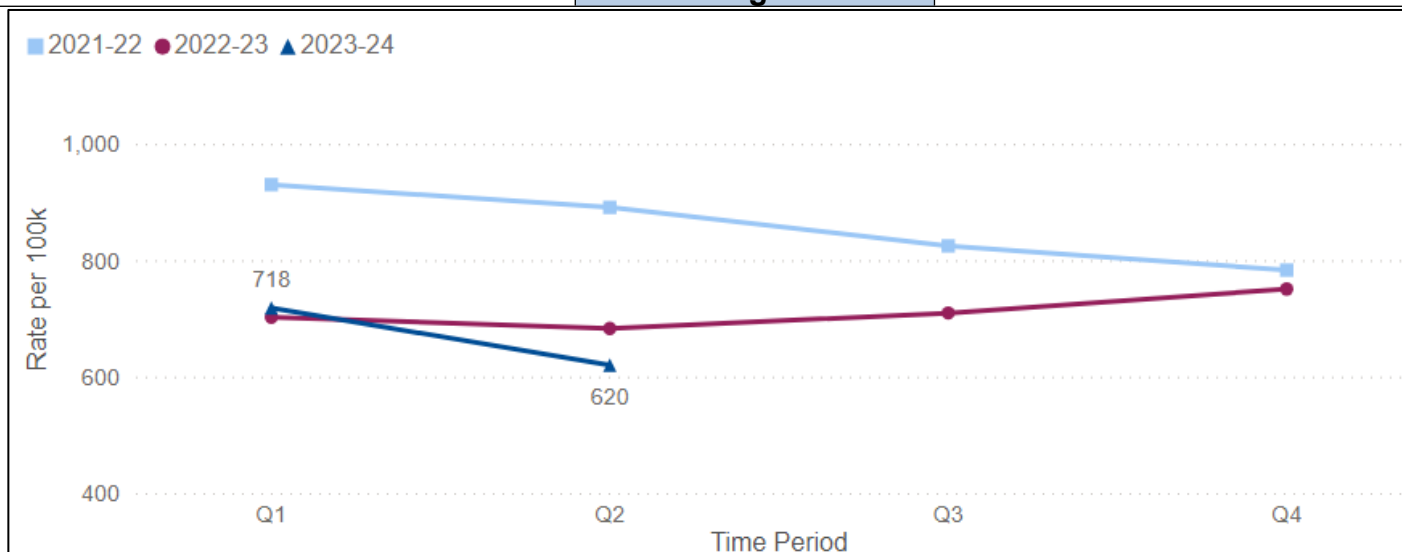
- This figure has remained fairly consistent over a number of years and will be linked with the capacity which the market has available.

Rate of permanent admissions to residential & nursing care homes per 100k population (65+)

Aim: Monitoring Measure only

UN Sustainable Development Goal: 3

Most Recent Status: September 2023	Monitoring Measure
Previous Status: June 2023	Monitoring Measure



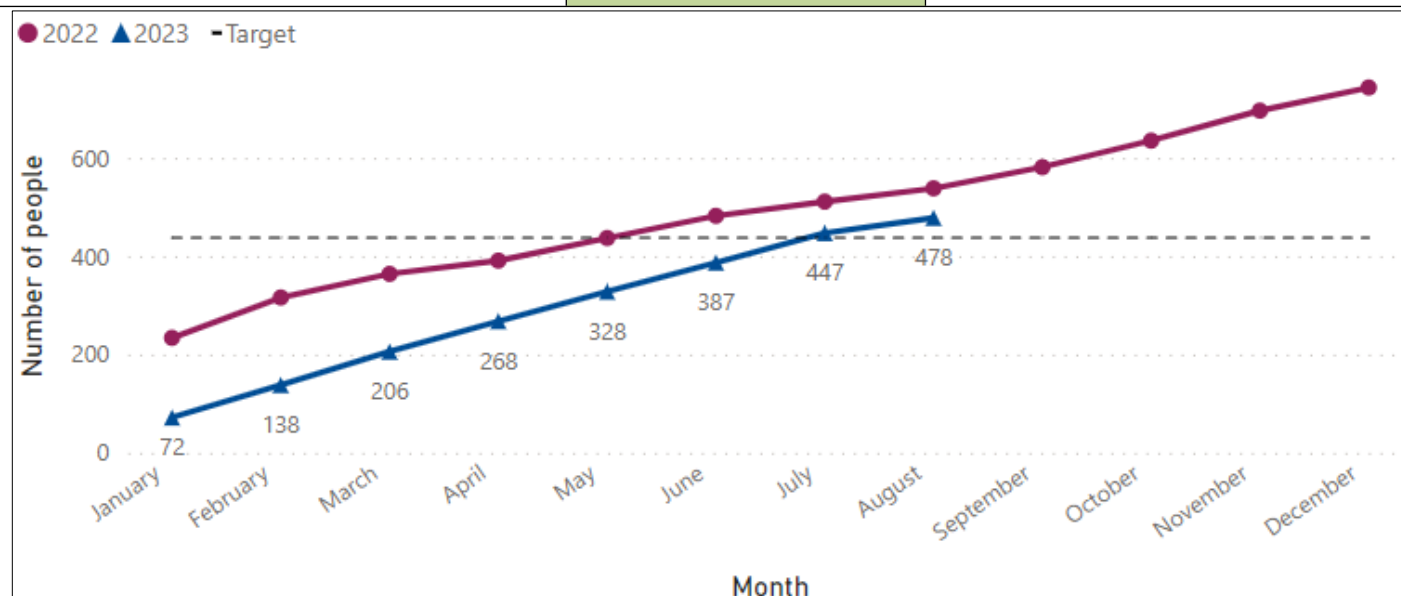
- Reduced numbers of new placements in 2023-24 has seen the rolling 12-month rate per 100k reduce.
- Historic monthly activity will however increase due to return to funding clients placements being added or back-dated. This will result in an increase in the rate per 100k at the year end.

Smoking Quitters – number of people quitting smoking at 4 weeks

Aim: Number of people quitting smoking at 4 weeks reaching end of year target

UN Sustainable Development Goal: 3

Most Recent Status: September 2023	GREEN
Previous Status: June 2023	GREEN



- Data is accurate to 7 September 2023. Please note there can be a data lag of 6 weeks.
- This indicator includes those who have quit smoking with specialist support.
- The contract year for the stop smoking service runs from 1 January to 31 December.

Number of people achieving weight loss of 5% of body weight in 12 weeks (in commissioned service)

Aim: Number of people achieving 5 percent weight loss reaches/exceeds the end of year target

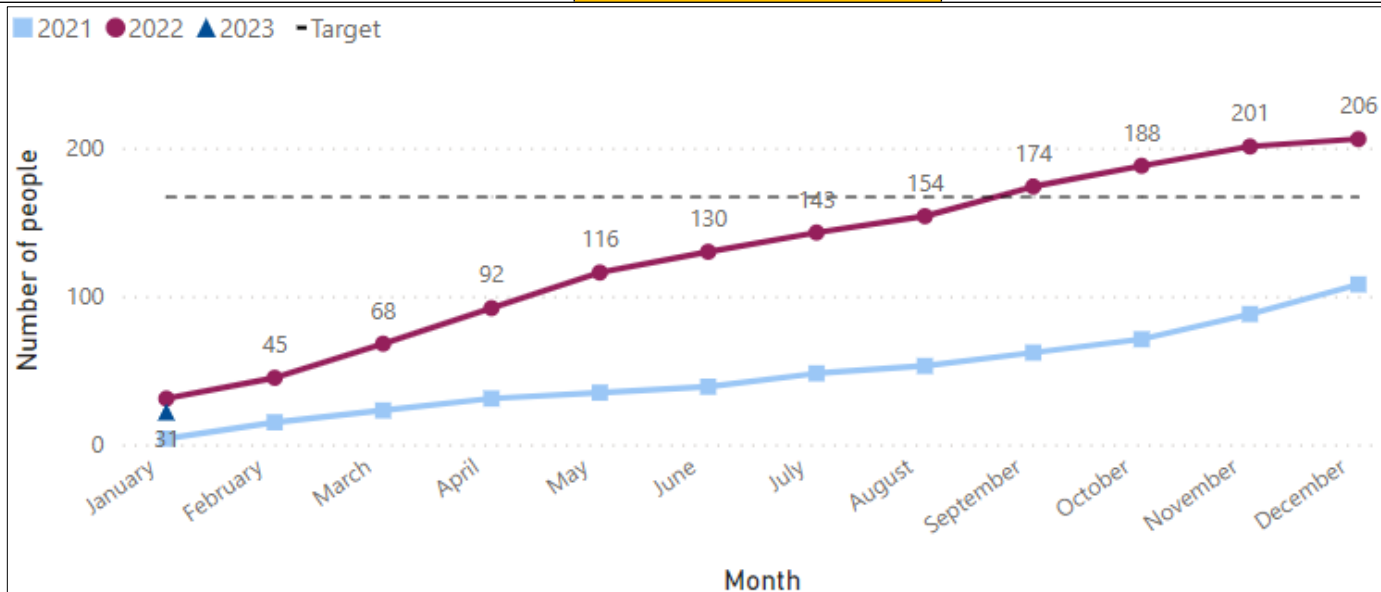
UN Sustainable Development Goal: 3

Most Recent Status: July 2023

N/A

Previous Status: March 2023

AMBER



- The Tier 2 Weight Management contract stopped taking on new referrals from the 1 February 2023 due to the early exit of the Tier 2 Weight management contract.
- The new Tier 2 Adult Behavioural Weight Management Service went live on the 1 July 2023. There is a 12-week delay in the performance data, meaning that Q2 performance will be reported in Q3.

Number of adults 25+ taking part in sport or physical activity

Aim: Number of Adults taking part in sport or physical activity reaches/exceeds 16,000 end of year target

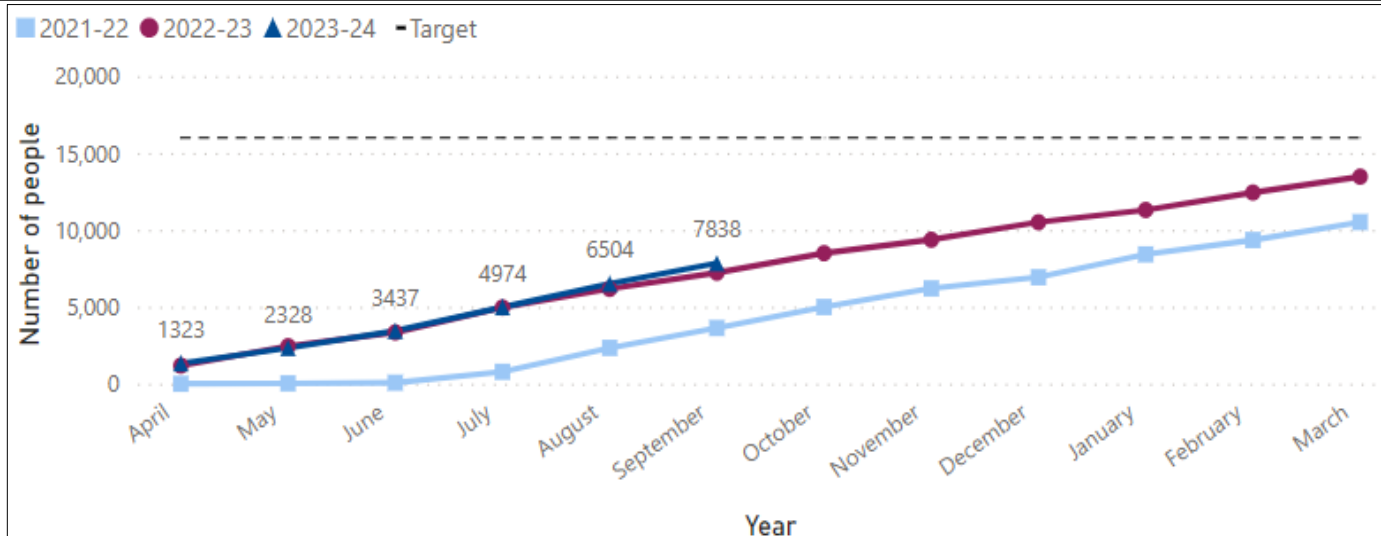
UN Sustainable Development Goal: 3

Most Recent Status: September 2023

AMBER

Previous Status: June 2023

AMBER



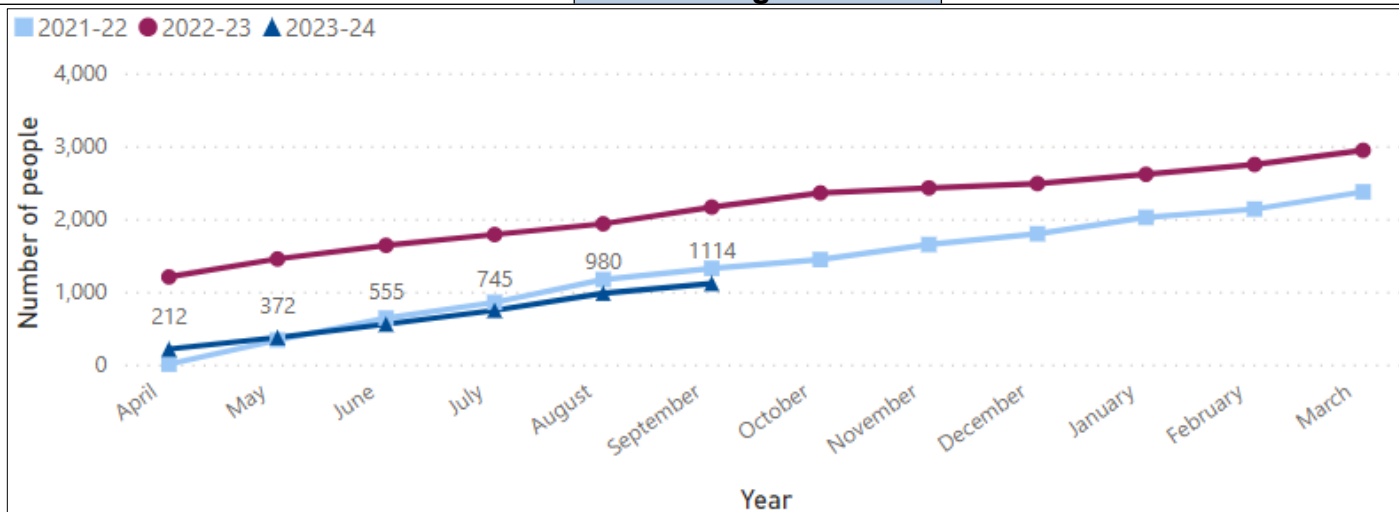
- Activities taking place include the parkrun.
- By the end of quarter 2, we had achieved 45.1 percent of our target (7,838 of 16,000).

Number of juniors and young people (under 25) taking part in sport and play activity

Aim: Number of juniors taking part in sport or physical activity increases

UN Sustainable Development Goal: 3

Most Recent Status: September 2023	Monitoring Measure
Previous Status: June 2023	Monitoring Measure



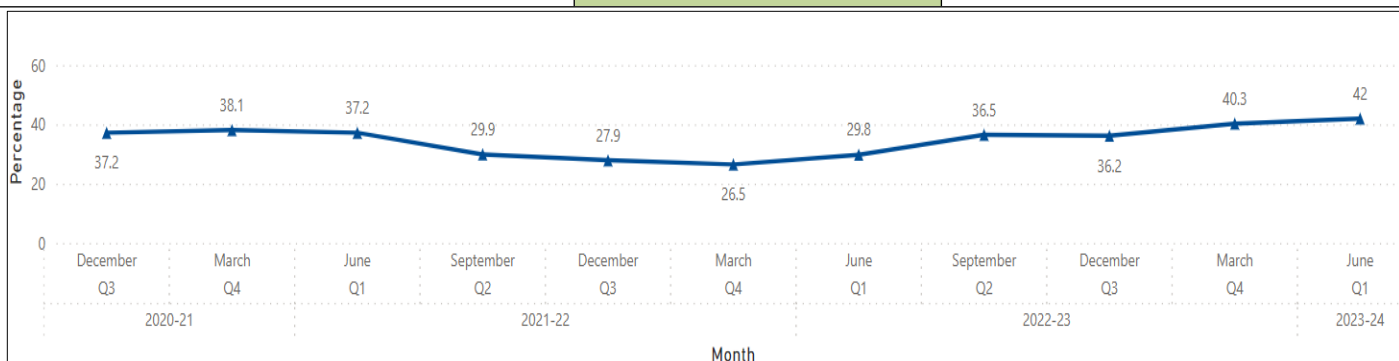
- Activities taking place in schools include junior parkrun, Duke of Edinburgh Award and Bikeability.

Successful completion of alcohol treatments

Aim: Successful completion of treatment exceeds end of year target

UN Sustainable Development Goal: 3

Most Recent Status: June 2023	GREEN
Previous Status: March 2023	GREEN



- The data captured in the National Drug Treatment Monitoring System shows only structured treatment outcomes.
- Quarter 2 2023-24 data is expected to be published in November 2023 and will be available in the Q3 report.

Average number of people on housing register per month in each of the bands

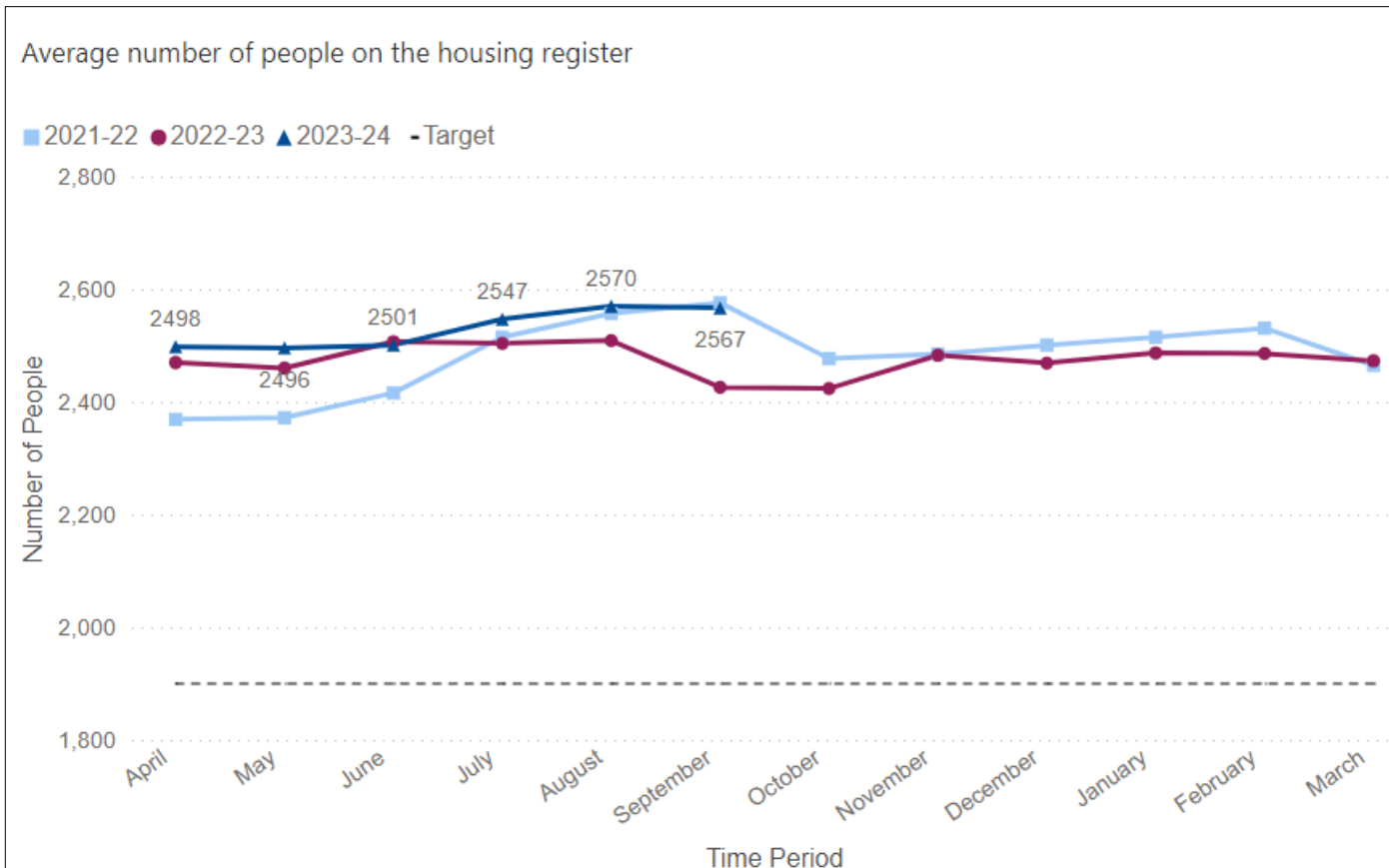
Aim: Reduction in the number of people on each band of the housing register at month end

UN Sustainable Development Goal: 11

Most Recent Status: September 2023	RED
Previous Status: June 2023	RED

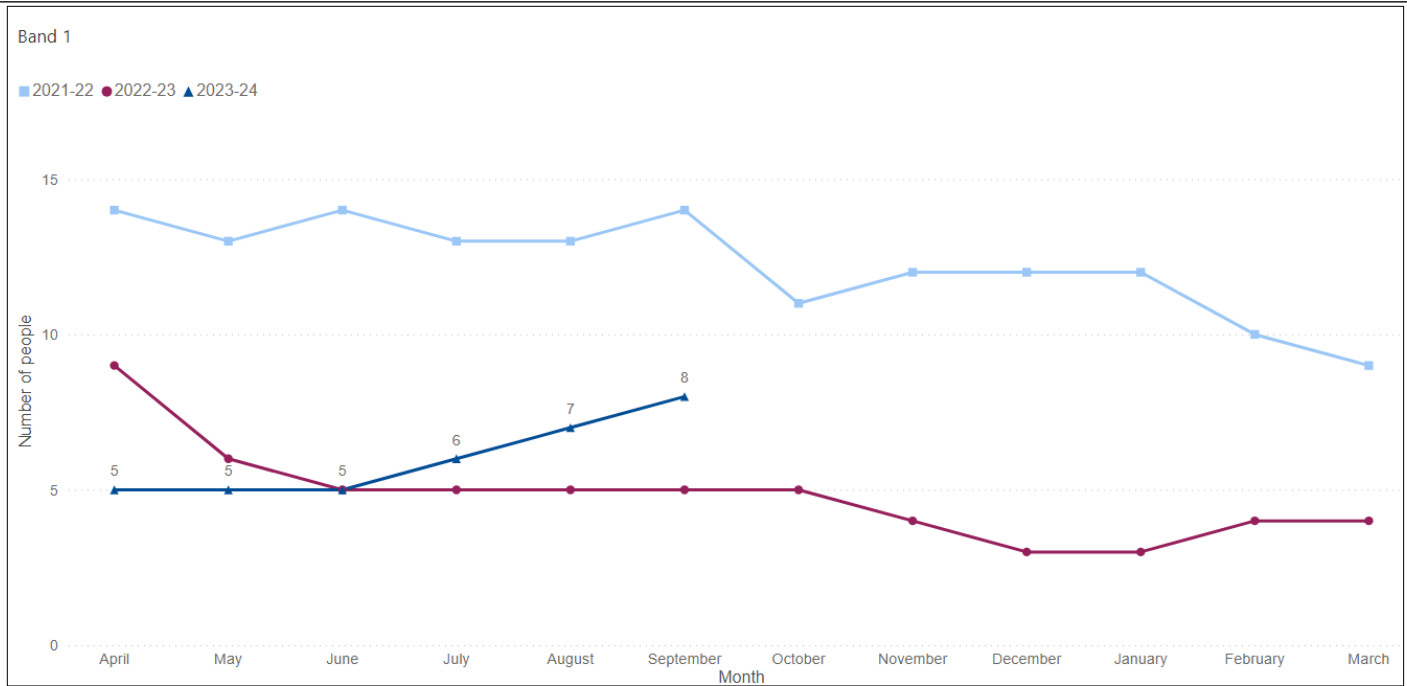
Applications are assessed and placed in one of five bands according to their housing needs. Within each band, applications will be placed in priority date order, with the application with the oldest date having the highest priority. The date that is normally used is the date the housing need is assessed. Where circumstances change and a move between bandings occurs, the priority date will be changed to the date when the housing need was reassessed.

Band	Criteria
Band 1	<ul style="list-style-type: none"> Urgent medical/welfare issues Multiples of band 2
Band 2	<ul style="list-style-type: none"> Severe overcrowding (at least 2 bedrooms) Severe under occupation (social housing tenants' resident on the Island) Sever medical/welfare issues. Applicants identified as being ready for 'move-on' accommodation. Social housing tenants on the Island vacating disabled adapted accommodation.
Band 3	<ul style="list-style-type: none"> Multiples of band 4
Band 4	<ul style="list-style-type: none"> Homeless applicants Significant medical/welfare issues Hazardous property condition as defined by the Housing Renewal team. Lacking or sharing amenities Households within insecure accommodation Minor overcrowding (1 bedroom) Minor under occupation (private tenants or owner occupier's resident on the Island)
Band 5	<ul style="list-style-type: none"> Households with secure accommodation and no other housing need.

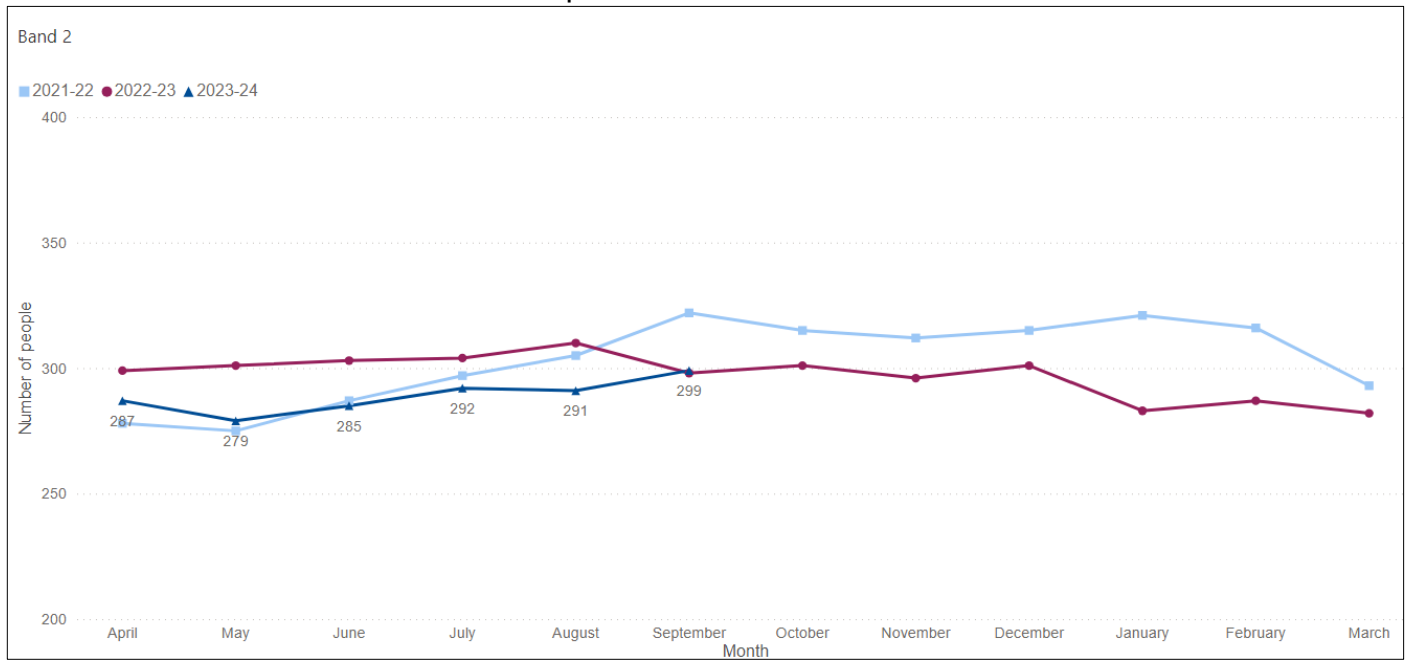


- The number of people on the housing register fell slightly between August and September.
- At the end of quarter 2, the number of the housing register remained higher than the previous year (2567 in 2023-24 compared to 2426 in 2022-23)

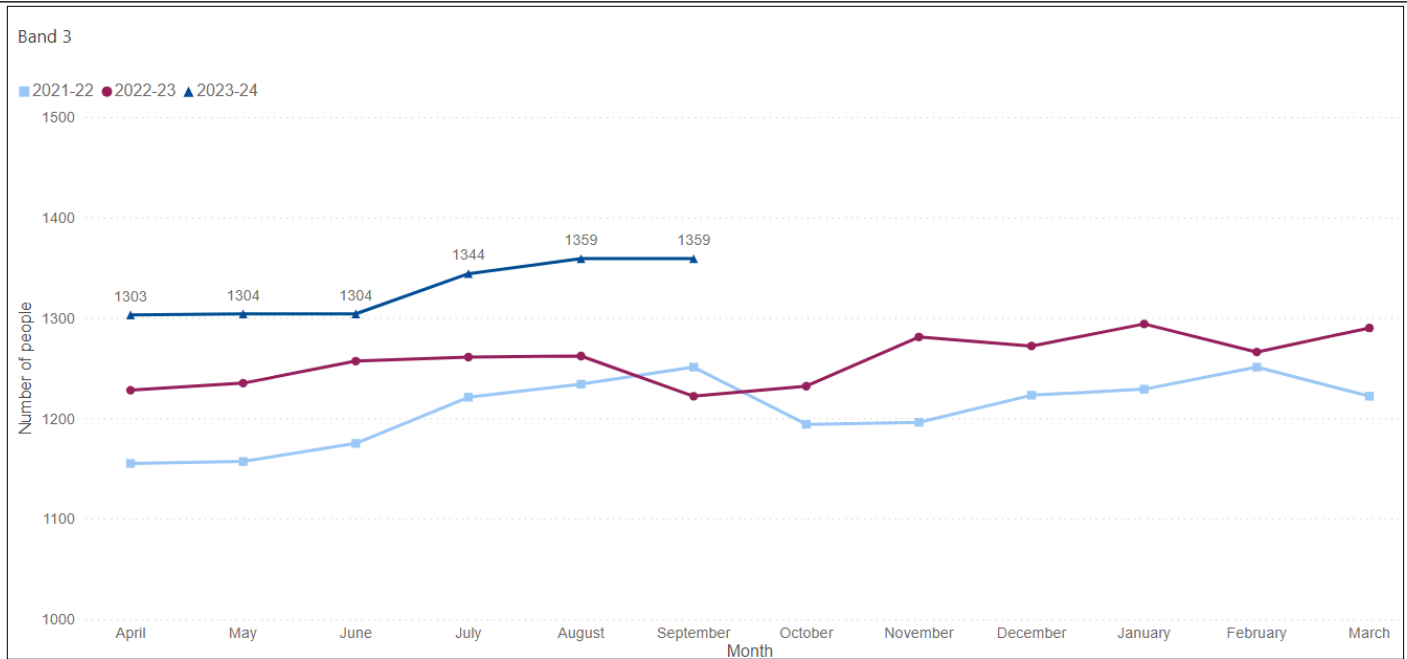
Number of households on each band of the housing register:



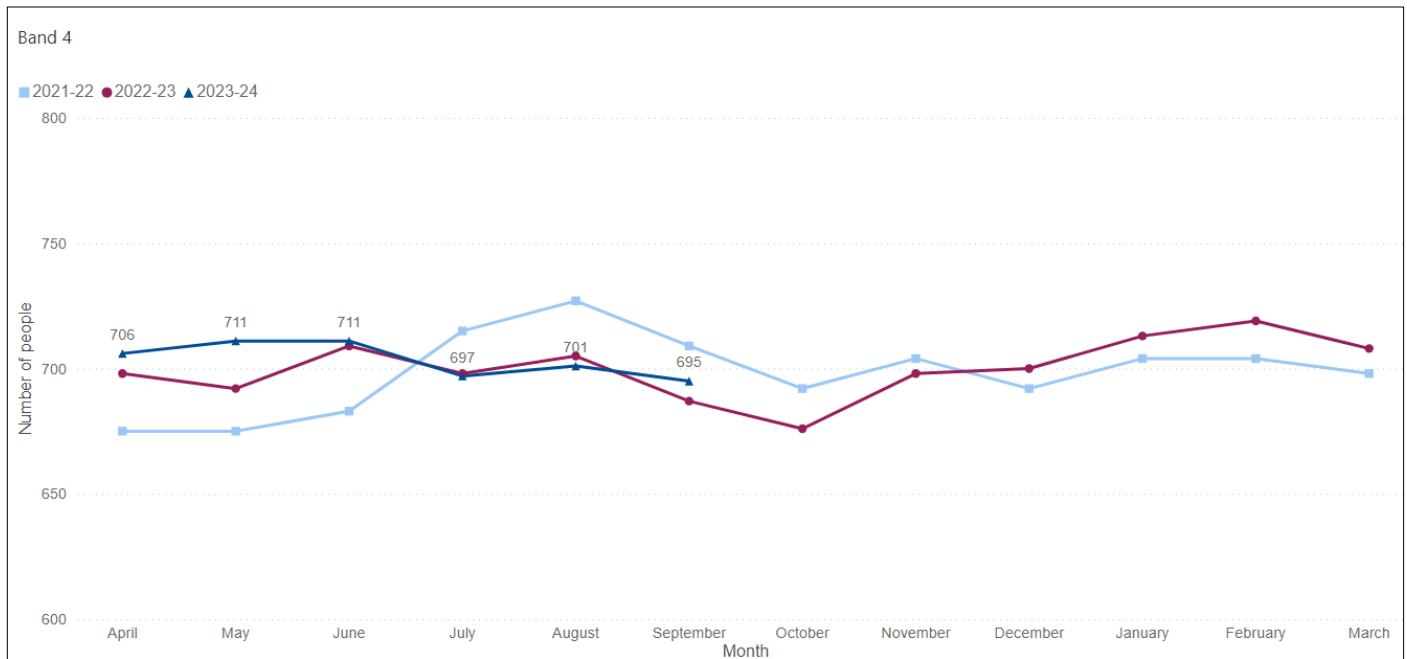
- The number of households have risen slightly, ending quarter 2 with 8 households, this is 3 more than at the end of the same period in 2022-23.



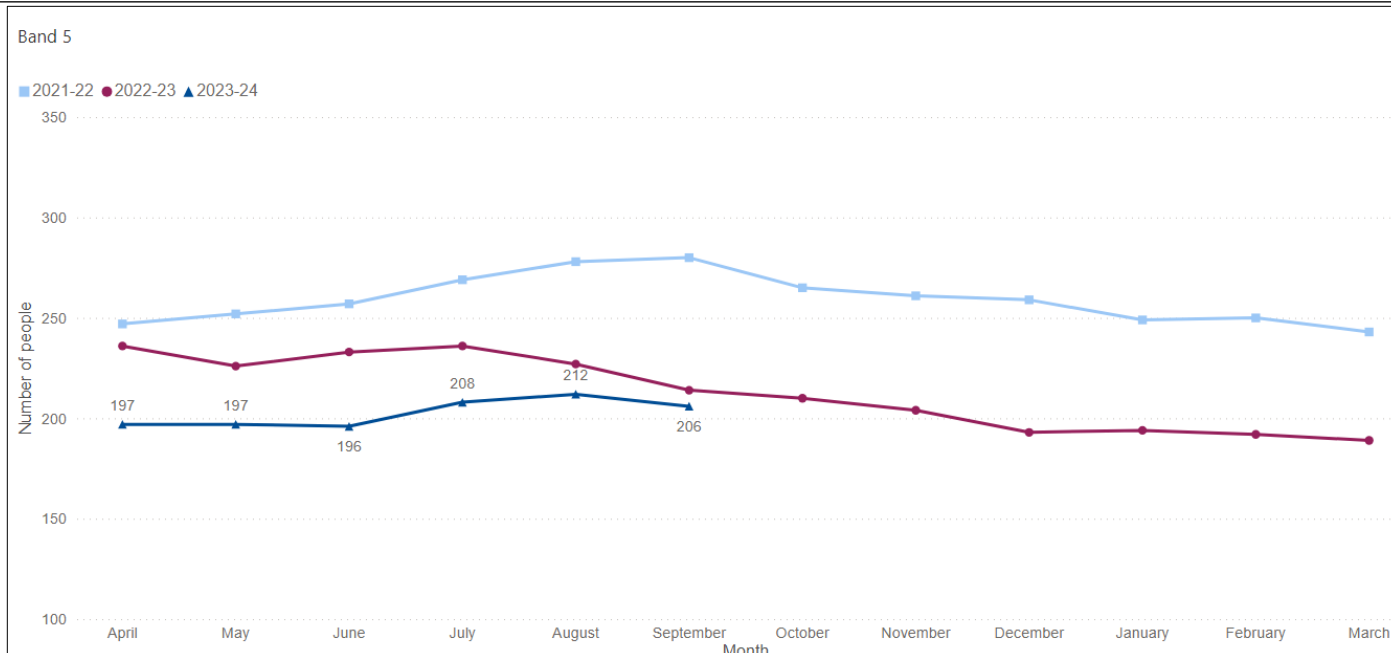
- The number of households has continued to rise, with 299 on band 2 at the end of the quarter. This is consistent however with the total at the end of the same period in 2022-23 (298)



- The number of households has increased during quarter 2 but remained consistent between August and September. The number of households on band 3 is higher than at the end of the same period in 2022-23 (1359 in 2023-24 compared to 1222 in 2022-23)



- The number of households on band 4 remained consistent during quarter 2, with a slight decrease when compared to the end of quarter 1.



- The number of households rose slight during quarter 2, but totals remain lower than previous years.

Number of households prevented from becoming homeless

Aim: Monitoring Measure only

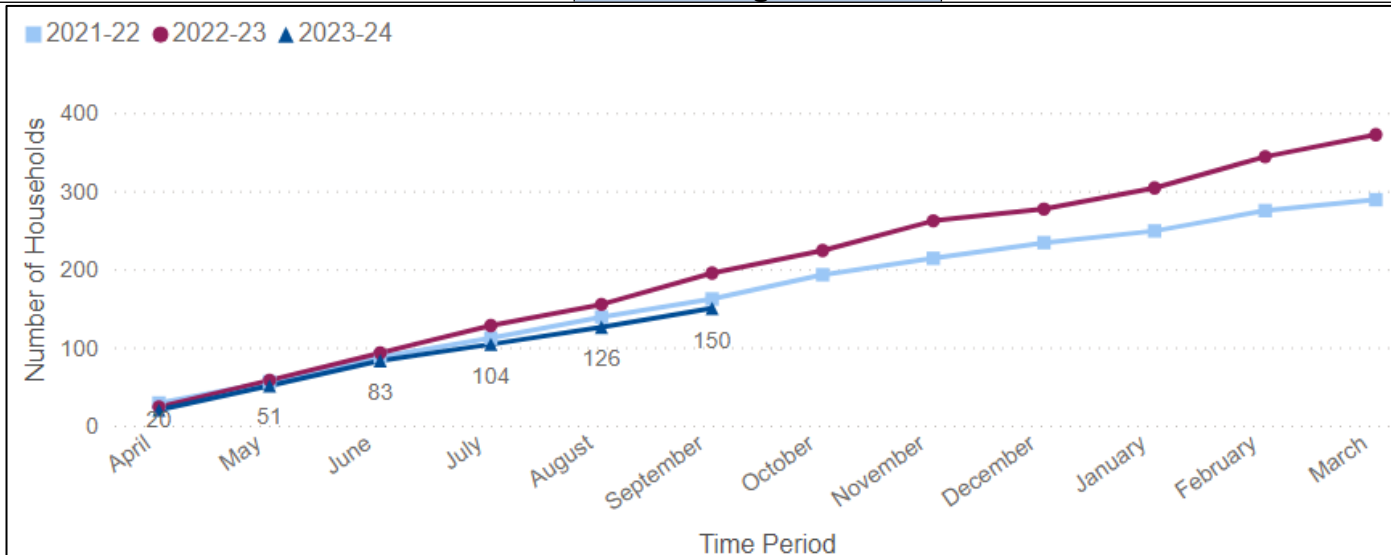
UN Sustainable Development Goal: 1

Most Recent Status: September 2023

Monitoring Measure

Previous Status: June 2023

Monitoring Measure



- The number of households was 150 at the end of quarter 2. This remains lower than the previous two years (162 in 2021-22 and 195 in 2022-23)

Number of households in temporary accommodation

Aim: Monitoring Measure only

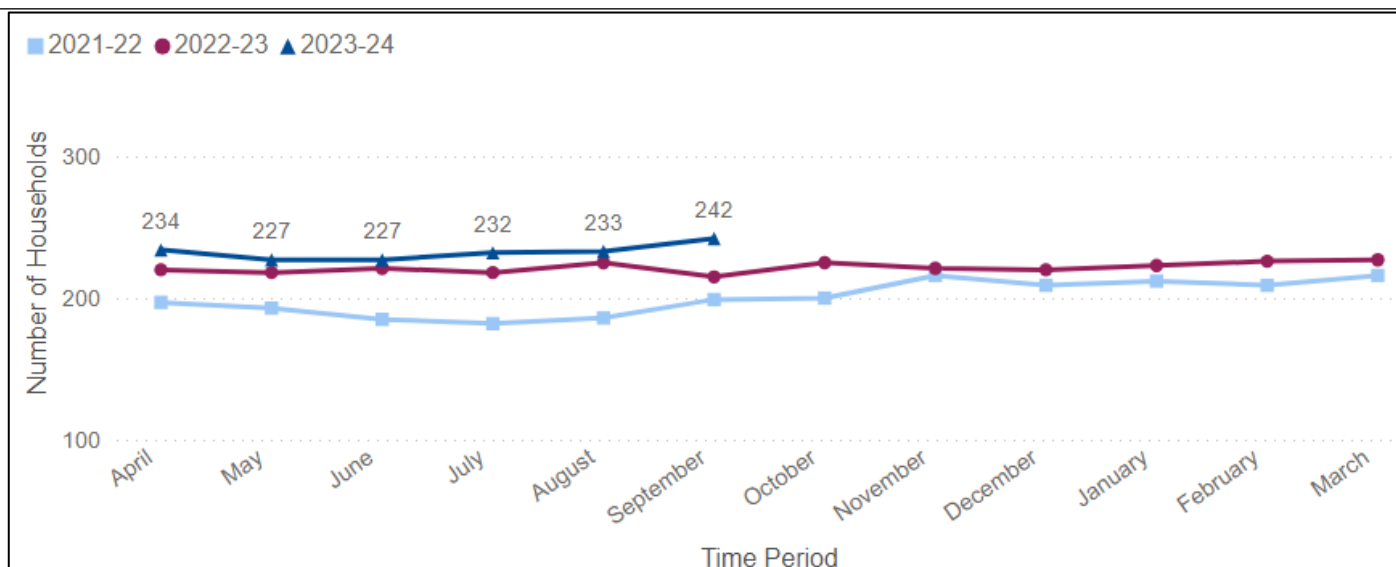
UN Sustainable Development Goal: 1

Most Recent Status: June 2023

Monitoring Measure

Previous Status: March 2023

Monitoring Measure



- The number of households in temporary accommodation has increased slightly during quarter 2 from 227 in June to 242 in September. The numbers for 2023-24 remain higher than those of 2022-23.

Number of households who are homeless, in temporary accommodation or emergency accommodation in each housing band and number of bedrooms required

Aim: Monitoring Measure only

UN Sustainable Development Goal: 11

Most Recent Status: September 2023 **Monitoring Measure**

Previous Status: N/A **Monitoring Measure**

Number of households who are homeless, in temporary accommodation or in emergency ...

Year	Band 1	Band 2	Band 3	Band 4	Band 5
2023-24					
September	0	16	193	1	0
Total	0	16	193	1	0

Number of households who are homeless, in temporary accommodation or in emergency ...

Year	1 Bed	2 Bed	3 Bed	4 Bed	5 Bed	6 Bed
2023-24						
September	29	89	69	20	2	1
Total	29	89	69	20	2	1

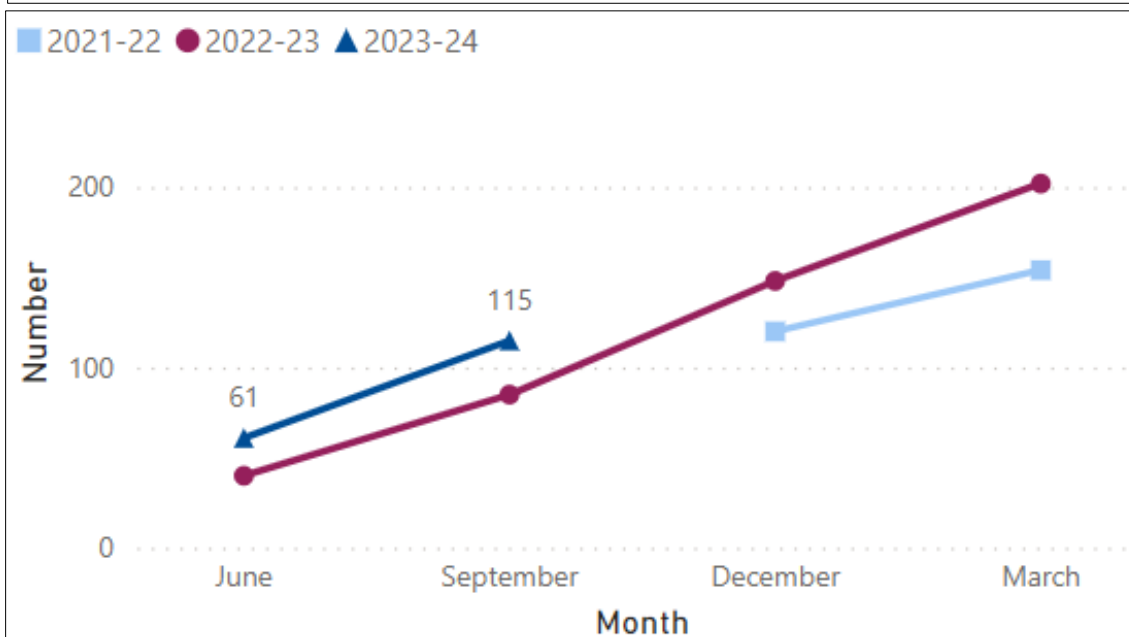
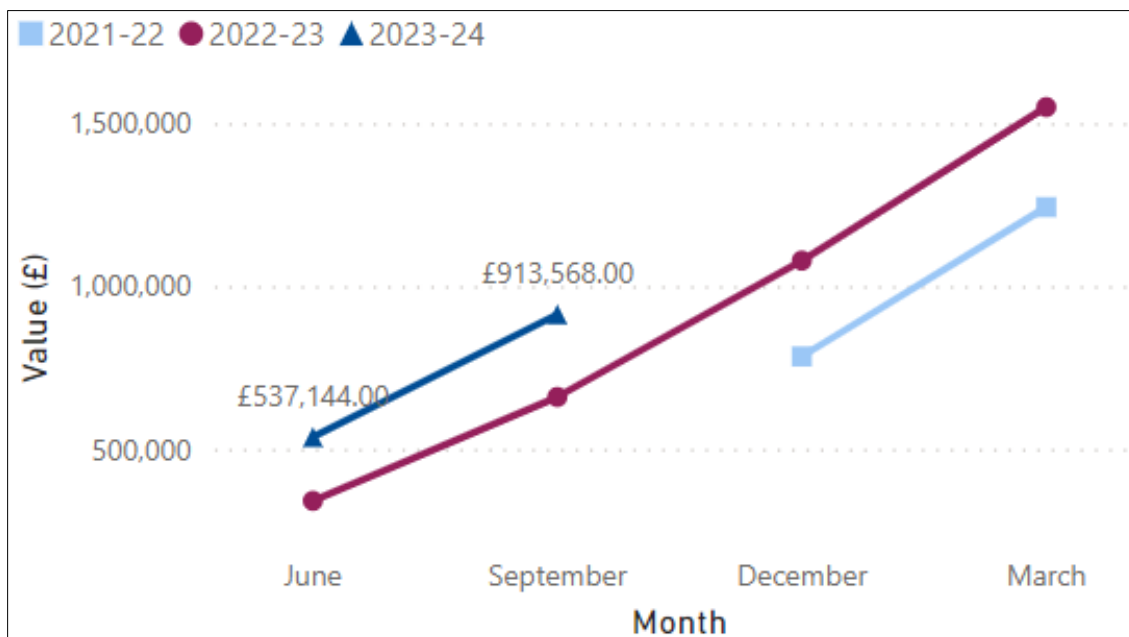
- This is a new measure added in quarter 2.

Number & value of Disabled Facility Grants approved

Aim: Monitoring Measure only

UN Sustainable Development Goal: 11

Most Recent Status: September 2023	Monitoring Measure
Previous Status: June 2023	Monitoring Measure



- Coupled with the carried forward approved amount from 2022-23, the current live approved value of cases is £1.9m.

Service Updates - Key Aspirations and Ongoing Business

The following activity supports UN Sustainable Development Goal 1:

The Empty Property Strategy was approved by Cabinet in July 2023. Works are now progressing to address long-term empty properties.

The following activity supports UN Sustainable Development Goal 3:

The delayed development of the IW Independent Living Strategy has progressed well. All consultation activity has concluded, and we are on target to deliver the draft strategy for approval this autumn.

The carers strategy action plan is now in place and a Steering group set up with partners and local carers to ensure its delivery.

The waiting list for Disabled Facilities Grants (DFG) has been abolished now, with no customers waiting to be allocated for a significant time. Demand is consistent with previous updates, currently at £3.3 million with an expected end of year commitment of £4 million. Budget has been reduced to £1.8 million due to an in-year adjustment, however the total amount of approvals is now over that amount. The team are briefly delaying any new and non-urgent approvals by 1 month to reduce the risk of overspend. Any urgent cases will not suffer a delay, with more builders encouraged onto the approved builders list to help with demand.

In quarter 2, Public Health successfully mobilised the new Tier 2 Adult Behavioural Weight Management Service, 'Gloji Isle of Wight' which is delivered by Thrive Tribe. Due to the change of provider, from Solutions for Health to Thrive Tribe, the Isle of Wight stop smoking service has undergone a rebrand from 'Healthy Lifestyles Isle of Wight' to 'Smokefree Island'.

The sub groups for the Healthy Lifestyles plan have met to identify key priority areas for the next 12 months and these are to be presented to the steering group.

The collaborative procurement for the Hampshire County Council, Isle of Wight Council, Portsmouth City Council and Southampton City Council (HIPS) Integrated Sexual Health Service is now complete. Following evaluation and due diligence the contract will be awarded to Solent NHS Trust. The new contract will commence on 1 April 2024 for a period of up to nine years. Mobilisation will commence in Q3, to include a transformation programme to ensure an effective and agile service for Island residents, focusing on prevention and improving access to reduce health inequalities. The Solent NHS Trust Systems Thinking roll out on the Island went live in Q2. Early data shows that the clinical front door is improving service outcomes, quality, and efficiency. We are currently working with partners to scope the Health Education England (HEE) funded workforce development project to improve wider workforce sexual and reproductive health training for Island professionals, with a focus on sustainability and train the trainer model.

The Island Mental Wellbeing Plan and Suicide Prevention plan has been approved by the Island Health and Wellbeing Board in July, with annual updates planned moving forwards. The Island Mental Wellbeing Plan sets out how we can improve our own and others' mental wellbeing across the Island. It is overseen by the Mental Health and Suicide Prevention Partnership, and delivery is achieved through the Island's Mental Health Alliance, which has over 40 organisations and strong representation from the voluntary and community sector.

Work has been undertaken to support World Suicide Prevention (10 September) and World Mental Health Day (10 October). Campaigns for the Island include promotion of the Life Cards, supporting people to know where to go should they need help, and a focus on the five ways to wellbeing to support simple steps around mental health and suicide prevention through Mental Health First Aid and Suicide First Aid training.

The following activity supports UN Sustainable Development Goal 16:

Public Health are supporting the multi-agency Island Food Security Group which includes voluntary and community sector organisations. As part of this work a food security survey has been delivered over the summer, the findings of which will be used to inform future direction.

Strategic Risks

Failure to recruit acceptable quality of professional practice across Adult Social Care (ASC) and Housing Needs		
Assigned to: Director of Adult Social Care		
Inherent score	Target score	Current score (October 23)
14 HIGH	6 LOW	8 MEDIUM
Previous scores		
August 23	June 23	March 23
8 MEDIUM	8 MEDIUM	8 MEDIUM
Risk score is consistent		

Failure to identify and effectively manage situations where vulnerable adults are subject to abuse		
Assigned to: Director of Adult Social Care and Assistant Director of Operations		
Inherent score	Target score	Current score (October 23)
16 VERY HIGH	6 LOW	8 MEDIUM
Previous scores		
August 23	June 23	March 23
8 MEDIUM	8 MEDIUM	11 MEDIUM
Risk score is consistent		

Failure to secure the required outcomes from the integration of adult social care and health		
Assigned to: Director of Adult Social Care		
Inherent score	Target score	Current score (October 23)
16 VERY HIGH	5 LOW	5 LOW
Previous scores		
August 23	June 23	March 23
5 LOW	5 LOW	5 LOW
Risk score is consistent		

Independent Social Care Sector Sustainability (care Homes and Home Care)		
Assigned to: Director of Adult Social Care		
Inherent score	Target score	Current score (October 23)
16 VERY HIGH	6 LOW	9 MEDIUM
Previous scores		
August 23	June 23	March 23
9 MEDIUM	9 MEDIUM	12 HIGH
No change to risk score		

**Additional demands placed upon the Isle of Wight Council and partners owing to pandemic flu or similar large-scale outbreaks
Assigned to: Director of Public Health**

Inherent score	Target score	Current score (October 23)
16 VERY HIGH	12 HIGH	12 HIGH
Previous scores		
August 23	June 23	March 23
12 HIGH	12 HIGH	12 HIGH
Risk score is consistent		